

# OABR Multi Media Switch



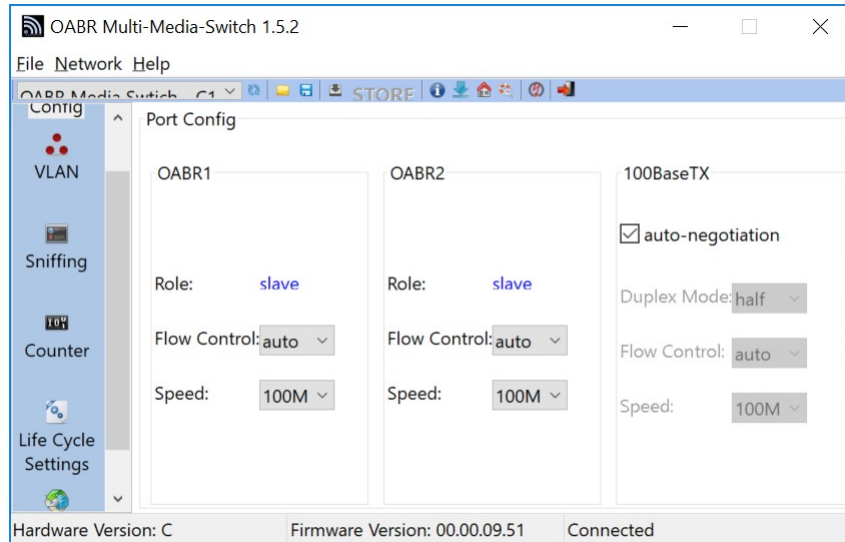
## Table of Contents

1 UI Scaling Issue.....	3
1.1 Problem Description.....	3
1.2 Problem Resolution.....	3

# 1 UI Scaling Issue

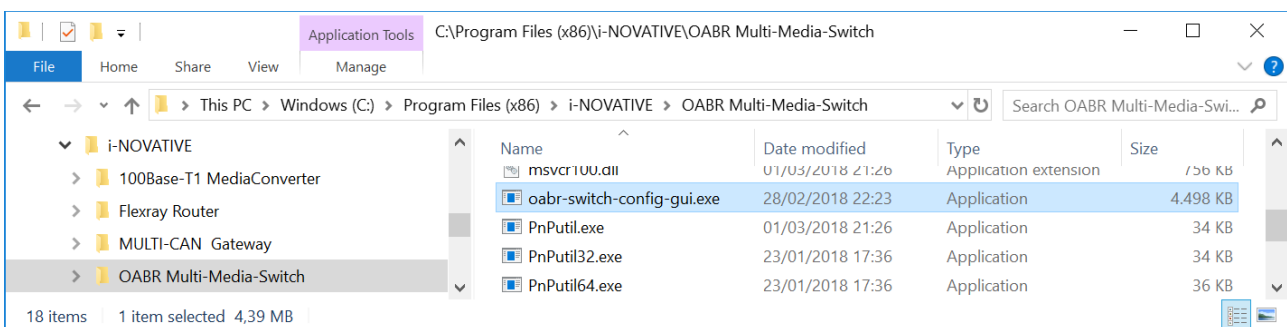
## 1.1 Problem Description

On Windows10, specifically with high resolution screens, the OABR Multi-Media-Switch UI may run into an issue with font and graphics scaling making it nearly impossible to use it.

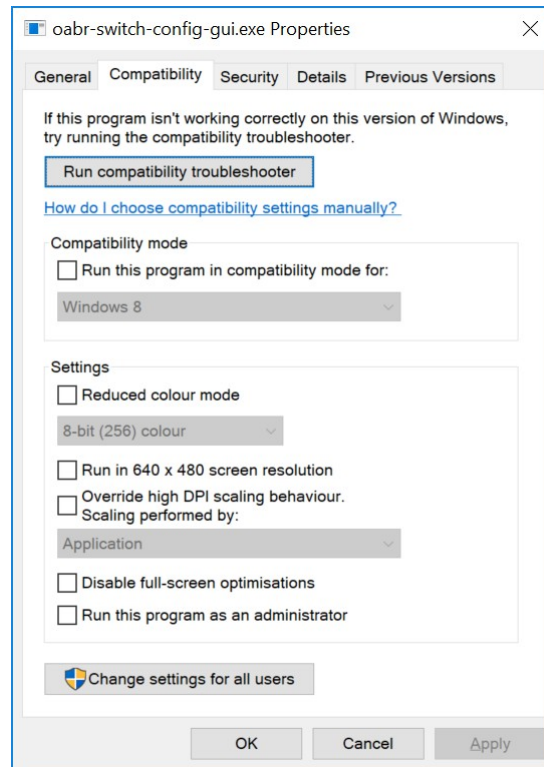


## 1.2 Problem Resolution

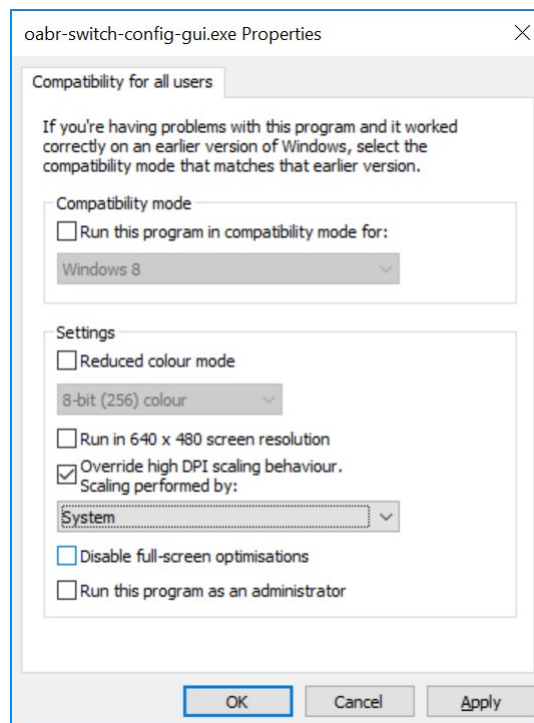
Find the *oabr-switch-config-gui.exe* binary. Usually, it is located in [C:\Program Files \(x86\)\i-NOVATIVE\OABR Multi-Media-Switch](C:\Program Files (x86)\i-NOVATIVE\OABR Multi-Media-Switch).



Right click the binary and select *Properties* → *Compatibility*.



Click *Change Settings for all users*.



Here check *Override high DPI scaling behavior*. In the *Scaling performed by*: drop down list, select *System* and close all property windows by clicking *OK*.

After restarting the UI, scaling works properly again.

The screenshot displays the 'Port Config' window of the OABR Multi-Media-Switch 1.5.2 software. The window title is 'OABR Multi-Media-Switch 1.5.2' and the menu bar includes 'File', 'Network', and 'Help'. The main content area is titled 'Port Config' and contains four panels for different ports: OABR1, OABR2, 100BaseTX, and USB. Each panel shows configuration options for Role, Flow Control, Duplex Mode, and Speed. The OABR1 and OABR2 panels have 'Role' set to 'slave', 'Flow Control' set to 'auto', and 'Speed' set to '100Mbps'. The 100BaseTX panel has 'auto-negotiation' checked, 'Duplex Mode' set to 'half', 'Flow Control' set to 'auto', and 'Speed' set to '100Mbps'. The USB panel has 'Duplex Mode' set to 'half', 'Flow Control' set to 'none', and 'Speed' set to '10Mbps'. A left sidebar contains navigation icons for 'Port Config', 'VLAN', 'Sniffing', 'Counter', 'Life Cycle Settings', and 'Firmware Flash'. The bottom status bar shows 'Hardware Version: C', 'Firmware Version: 00.00.09.51', and 'Connected'.

Port	Role	Flow Control	Duplex Mode	Speed
OABR1	slave	auto		100Mbps
OABR2	slave	auto		100Mbps
100BaseTX		auto	half	100Mbps
USB		none	half	10Mbps